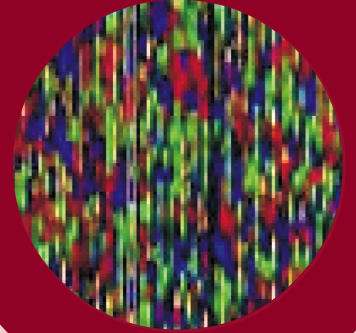




ImpactVector™: ultra-high level expression of proteins in plants

The Wageningen Genomics Facility

In the areas of plant-based pharmaceutical and industrial protein production, ImpactVector™ offers exceptionally attractive solutions. The ImpactVector™ expression system combines the low cost and scalability of plant production systems with an ultra-high yield of protein. With this system transgenic plants can deliver up to 3-5 g specialty protein per kg leaves 3 months after the start of the project using a novel Agrobacterium-based plant expression vector in a non-food host.



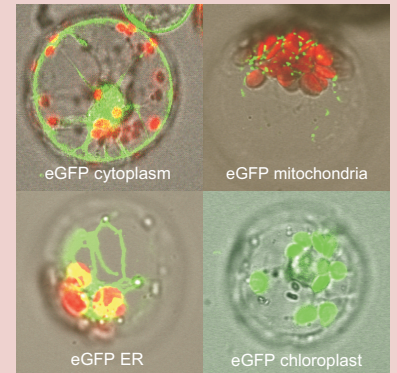
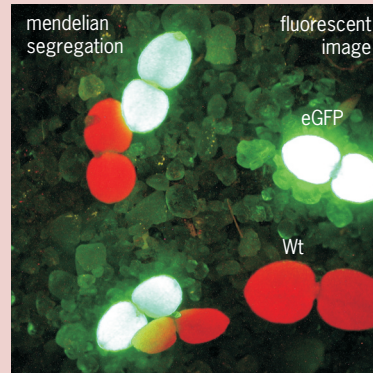
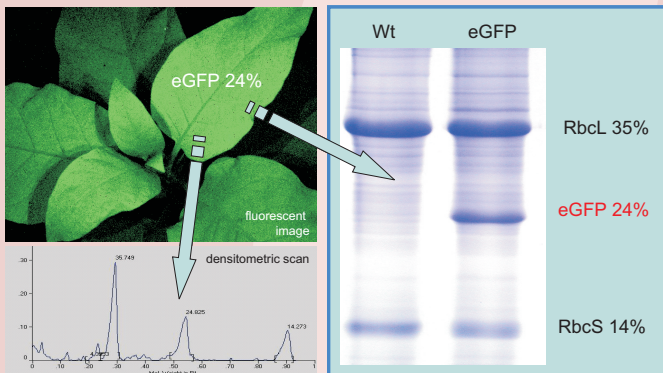
Technologies

ImpactVector™ technology achieves expression levels equivalent to Rubisco protein

- Up to 25% of total soluble protein using a novel rubisco small subunit promoter from chrysanthemum
- Expression and purification using tested subcellular targeting and tagging options
- Stable transmission of the trait to subsequent generations

Facilities

- ImpactVector™ has access to state of the art greenhouse facilities for the production of plant-made pharmaceutical and industrial proteins and enzymes
- Proteomics and metabolomics platforms to analyze your results with high accuracy
- Purification technology expertise to provide you with the highest purity grade



What's in it for you?

ImpactVector™ technology is an expression system which is available for use in your own lab. Alternatively, ImpactVector™ offers to express your gene of interest as a service

- Up to 3-5 g of protein per kg leaves
- Low cost production (greenhouse)
- Endlessly scalable (up to 120 g protein/m²/year)
- Fast turnover (6 weeks to the greenhouse)
- Fast technology access (you can start tomorrow)
- Low licence fee (one fee after two years)
- Optional proprietary glycosylation technology

Network

Since its launch in 2004 a substantial (large) number of biotech companies, including large multinationals, have chosen ImpactVector™ as expression system. Furthermore, the vectors have found worldwide acceptance in academic labs in some 20 countries across the globe.

More information:

Plant Research International - Dr. Maarten Jongmsma
P.O. Box 16, 6700 AA Wageningen, The Netherlands
Tel.: +31 (0)317 47 71 09 Fax: +31 (0)317 41 80 94
E-mail: maarten.jongmsma@wur.nl
Internet: www.impactvector.com