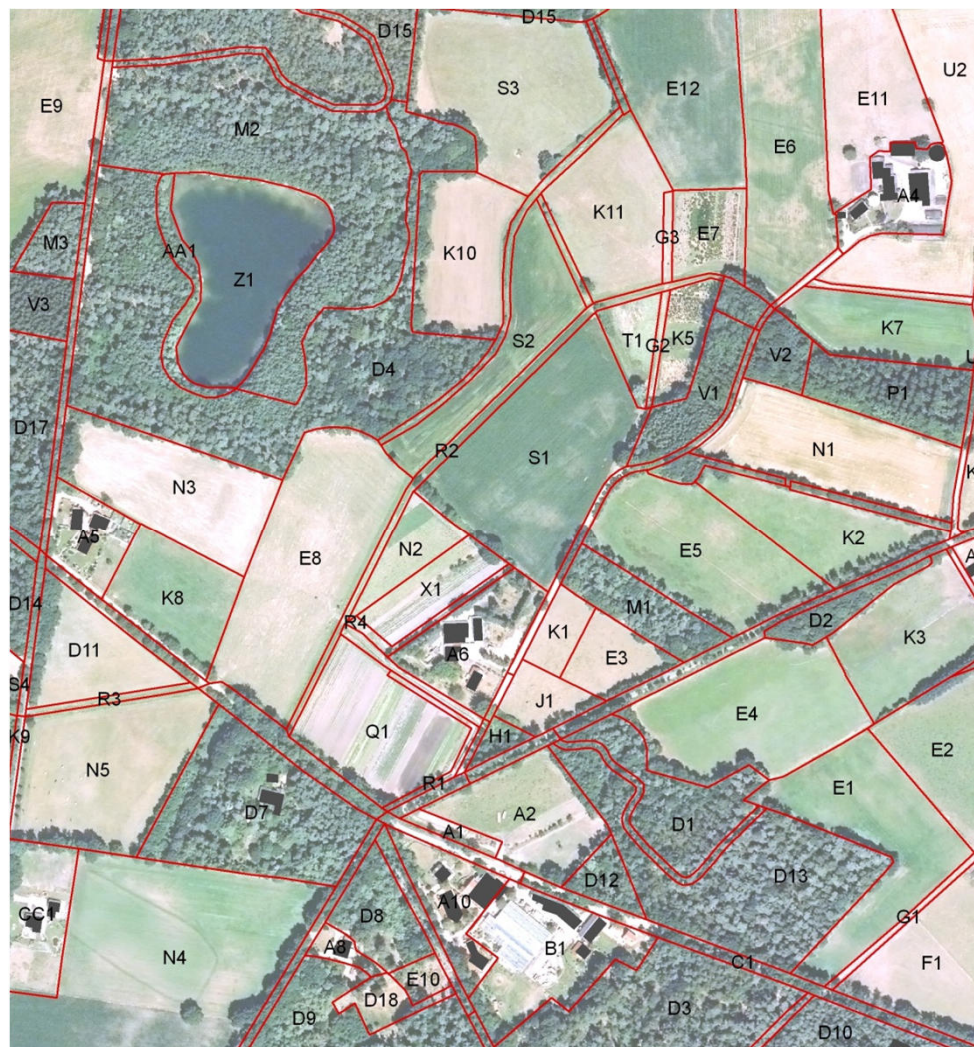


EBONE

Digitising Protocol

Marion Bogers

Philip Roche



www.ebone.wur.nl

General Purpose

- To provide final spatial data to report about habitat occurrences and to compute spatial parameters for habitat and landscape level.
- Aerial photo interpretation before going into the field to provide an initial delineation and coding of the element in order to facilitate the field work.



Nature of the Recorded Elements

EBONE Habitat	GIS layer	Rules
Areal	Polygons	Area \geq 400 m ²
Linear	Lines	Length \geq 30 m; Width \geq 1 m
Point	Points	Ecological significance



Accuracy and Digitizing

- Scale
 - ground resolution between 0.2 to 1m
 - Georeferenced and preferably orthorectified
- Age: less than 5 years old
- Google Earth
 - Sometimes the best available
 - “Show historical imagery”
- Avoid gaps between polygons by setting the snapping environment in GIS!



Georeferencing

- Mandatory that all data are georeferenced and all projection and datum information stored as metadata!
- For Europe : ETRS 1989 UTM
 - Follow INSPIRE Directive
 - http://inspire.jrc.ec.europa.eu/documents/Data_Specifications/INSPIRE_Specification_CRS_v3.1.pdf; <http://www.epsg-registry.org/>
- For World : EPSG:4326 = WGS84



Data Management

- Format
 - ArcInfo Shapefile format.
 - Areal, line and point habitat in separate shapefiles.
- Auxiliary files (attribute table and projection).
 - All send to the data manager together (Files: .shp, .shx, .dbf, .prj)!



Data Management

- Naming conventions
 - Layers: 2 letters for country + Zone Code + Habitat type
 - e.g. FR_0011_Areal.shp; FR_0011_Lines.shp
 - Elements :
 - use alpha coding to name elements; preferably using single part element (i.e. each record have it's own code)
- Use the same coding for recording into the field database.



Field computer: Access-based

BIO_SOS FIELD DATA BASE
Field Work Version V1.1

Database: D:\USERDATA\BIOSOS\Field computer\BIOSOS_FDB_DATA_v1.accdb

Enter UserName: **Bogers** Add user ...

Country: NL (NETHERLANDS)

Species List: The Netherlands

Reference lists

- refCountry
- refElementType
- refEnvStrata
- refEUNIS_AI
- refFarmClass
- refGHC
- refGlobQualifier
- refLifeForm
- refManagement_L1
- refManagement_L3
- refManagement_L4

Open Reference Table

DATA ENTRY

- 1 **LANDSCAPE SQUARES**
- 2 **ELEMENTS**
- 3 **VEGETATION PLOTS**

EXPORT DATA

- Import Squares
- Export Squares
- Export Polygons
- Export Plots

IMPORT DATA

- from ShapeFile

THAT'S ENOUGH FOR TODAY!

